



# Cannabis and ODA

Sunny Jones – Cannabis Policy Coordinator

# The Cole Memo – August 2013



- **Distribution to minors**
- **Revenue going to criminals**
- **Going to states where it is not legal**
- **Used as a cover for trafficking of other illegal drugs/activity**
- **Violence and use of guns in cultivation and distribution**
- **Drugged driving**
- **Growing on public lands – public safety and environmental dangers**

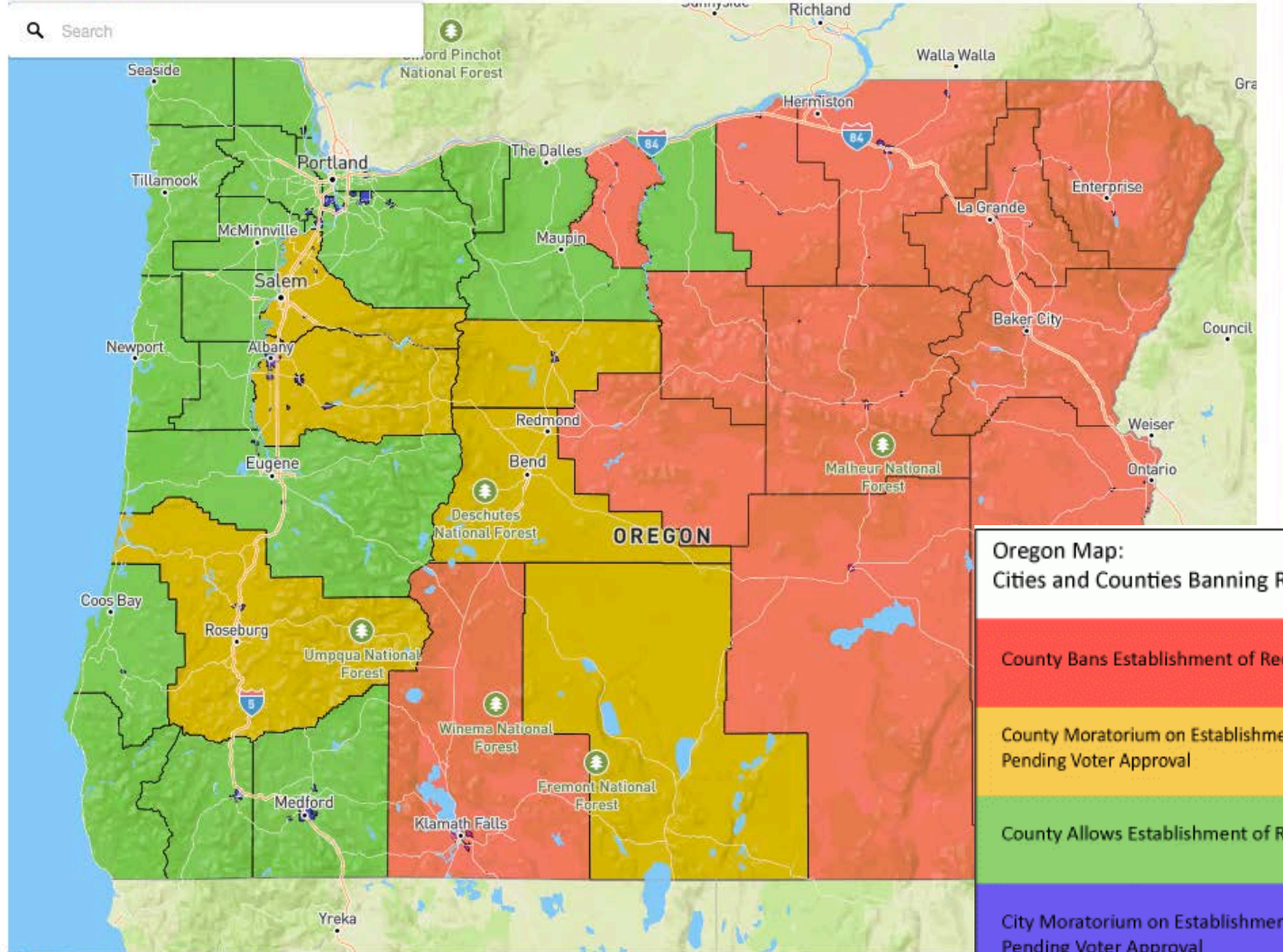
# Basic Overall Timeline



- **2014**
  - **Ballot Measure 91**
  
- **2015 Legislative Session**
  - **HB 3400**
  
- **2016 (Feb.) Legislative Session**
  - **SB 1511**
  - **SB 1598**
  - **HB 4014**

# Recreational Opt-out

version of your browser.



Tags: CANNABIS MAP OF OREGON

**Oregon Map:**  
Cities and Counties Banning Recreational Cannabis Operations

- County Bans Establishment of Recreational Marijuana Operations
- County Moratorium on Establishment of Recreational Marijuana Operations Pending Voter Approval
- County Allows Establishment of Recreational Marijuana Operations
- City Moratorium on Establishment of Recreational Marijuana Operation Pending Voter Approval
- City Bans Establishment of Recreational Marijuana Operations

# Agencies Involved

- **OLCC – recreational**
- **OHA – medical**
- **DLCD and local municipalities**
- **Water Resources Dept. – water rights**
- **DEQ – waste management**
- **DOR – taxes**
- **OSHA – worker protection**

# Agricultural Crop



- **Marijuana is:**
  - **A crop for the purpose of “farm use” as defined in ORS 215.203**
  - **A crop for the purposes of a “farm” and “farming practice,” both as defined in ORS 30.930**
  - **A product of farm use as described in ORS 308A.062**
  - **The product of an agricultural activity for purposes of ORS 568.909**

# ODA - Like Any Other Ag Crop

- **Food safety licenses**
  - Needed for concentrates/extracts going to be used for food
  - Needed for making edibles
  - Needed for retail facility
  - Homemade (for sale) not allowed
- **Voluntary fee for service**
  - Pest/disease/noxious weed id
  - Certification services

# ODA - Like Any Other Ag Crop

- **Pesticides**
  - Label is the law
  - Consult ODA guidelist of products
  - Applicators may need a license
- **Water quality**
  - Know water quality rules
  - Follow ag water quality plan for the area
- **Weights and measures**
  - Buy NTEP licensed scale
  - Use correct scale size



# Challenges

- Not legal at the Federal level
- No extension resources
- Use of the term organic
- THC vs CBD
- Co-existence
- Animal feed



# Opportunities



- **Cannabis (to include hemp) listserv –**  
<http://bit.do/cannabis-email>
- **Diversity of people involved - lots of cross communication and outreach to interested parties**
- **Working with OLCC, OHA, DOR, etc.**
- **Working with Colorado and Washington**

# 2016 Session Changes



- Removes 2 year residency requirement
- Early start on sales of edibles to recreational users
- Allow medical card holders to buy at a retail shop tax free
- Made it clear that medical mj is an ag crop
- Removed Right-to-farm protections

# OLCC Timeline



- **Jan. 2016 - Started accepting applications**
- **2<sup>nd</sup> Quarter 2016 – issue grower, processor, lab licenses**
- **June 28, 2016 – Commission adopt final rules**
- **3<sup>rd</sup> Quarter 2016 – issue retail store licenses**

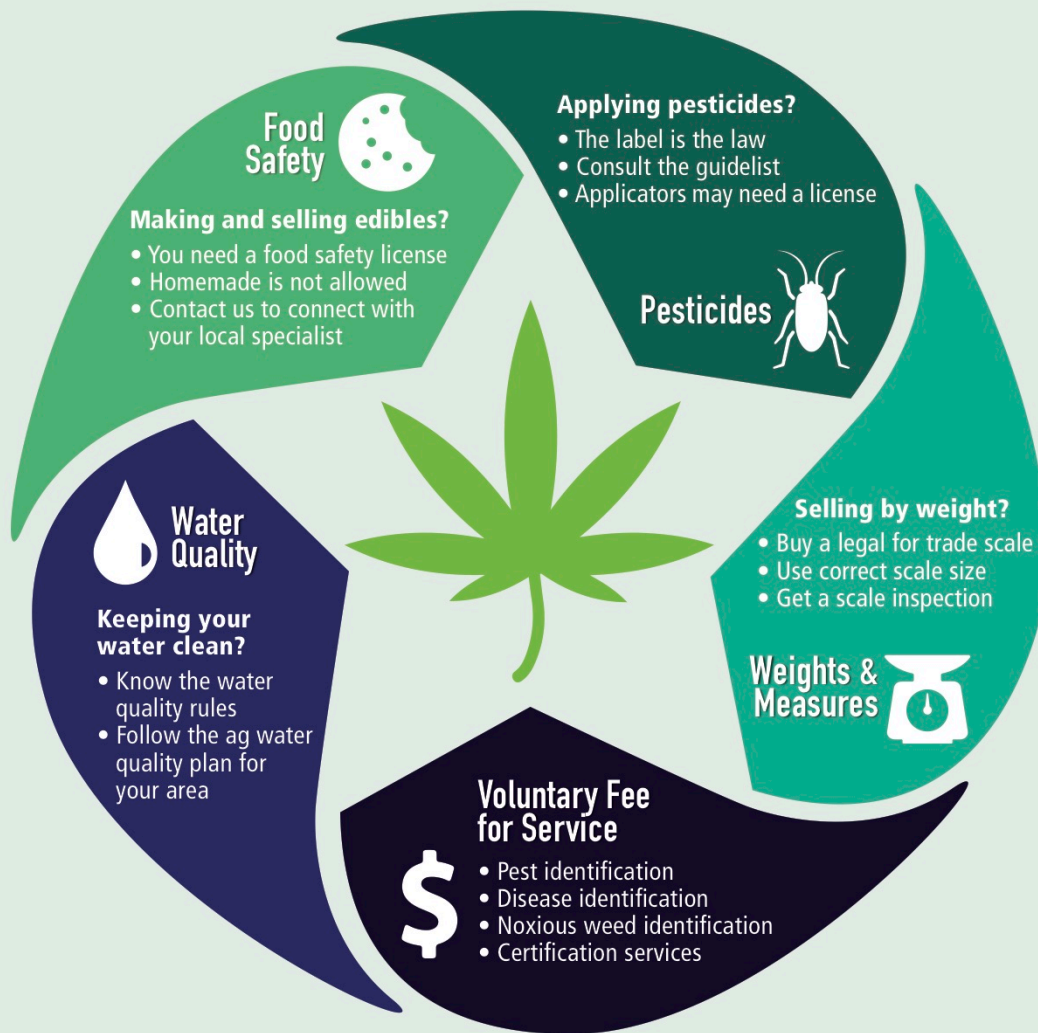
# OHA Timeline



- **April 2016 – start accepting processor license applications online**
- **Oct 2016 – dispensary that sells or handles food or cannabinoid edibles but be licensed by ODA**

# OREGON CANNABIS

Cultivate your business with the Oregon Department of Agriculture



The Oregon Department of Agriculture (ODA) administers many programs that affect agriculture producers and processors. These programs could apply to your cannabis business.



**Oregon**  
Department  
of Agriculture

**More info online: [bit.do/CannabisODA](https://bit.do/CannabisODA)**

**Sunny Jones, Cannabis Policy Coordinator: 503-986-4565**